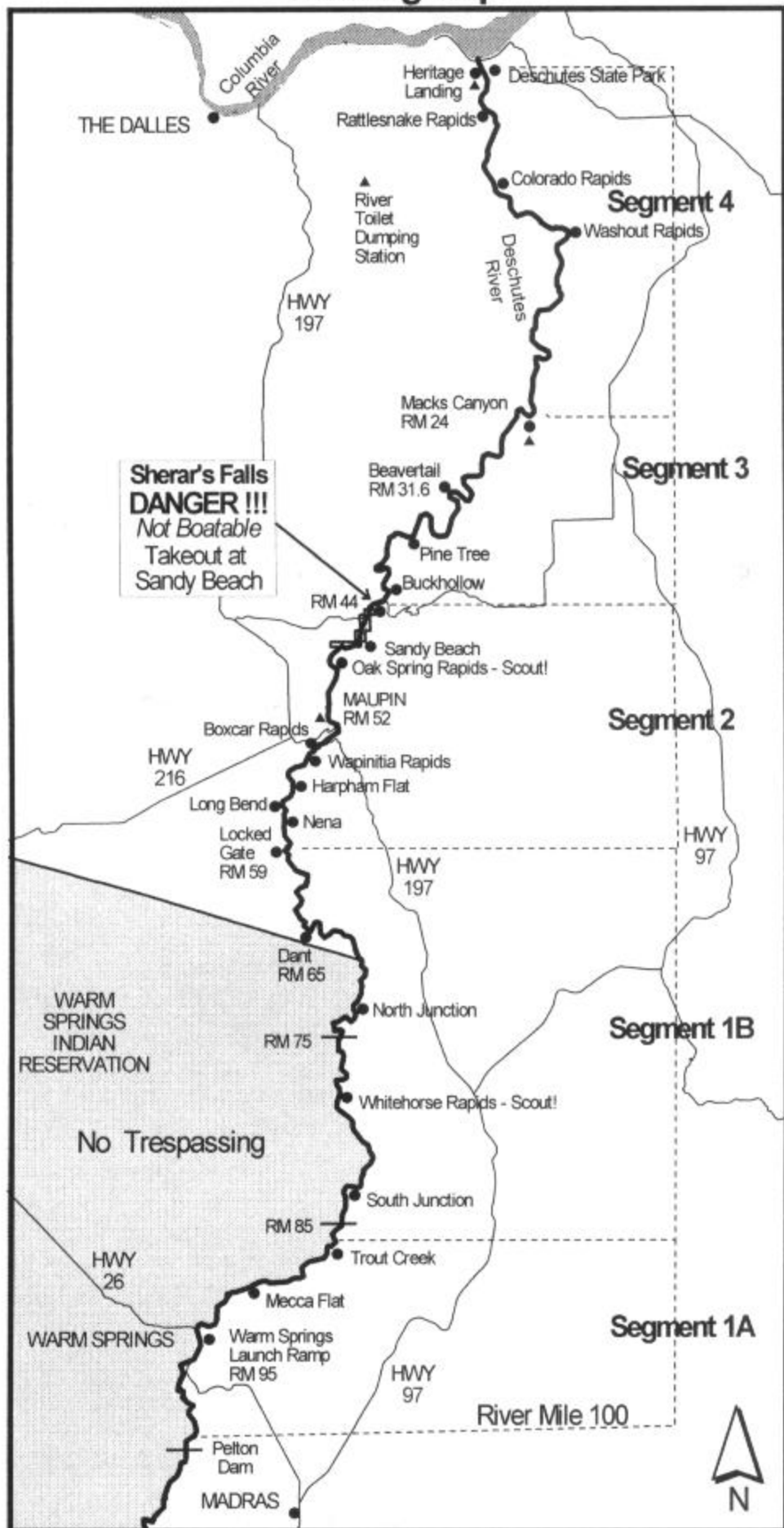
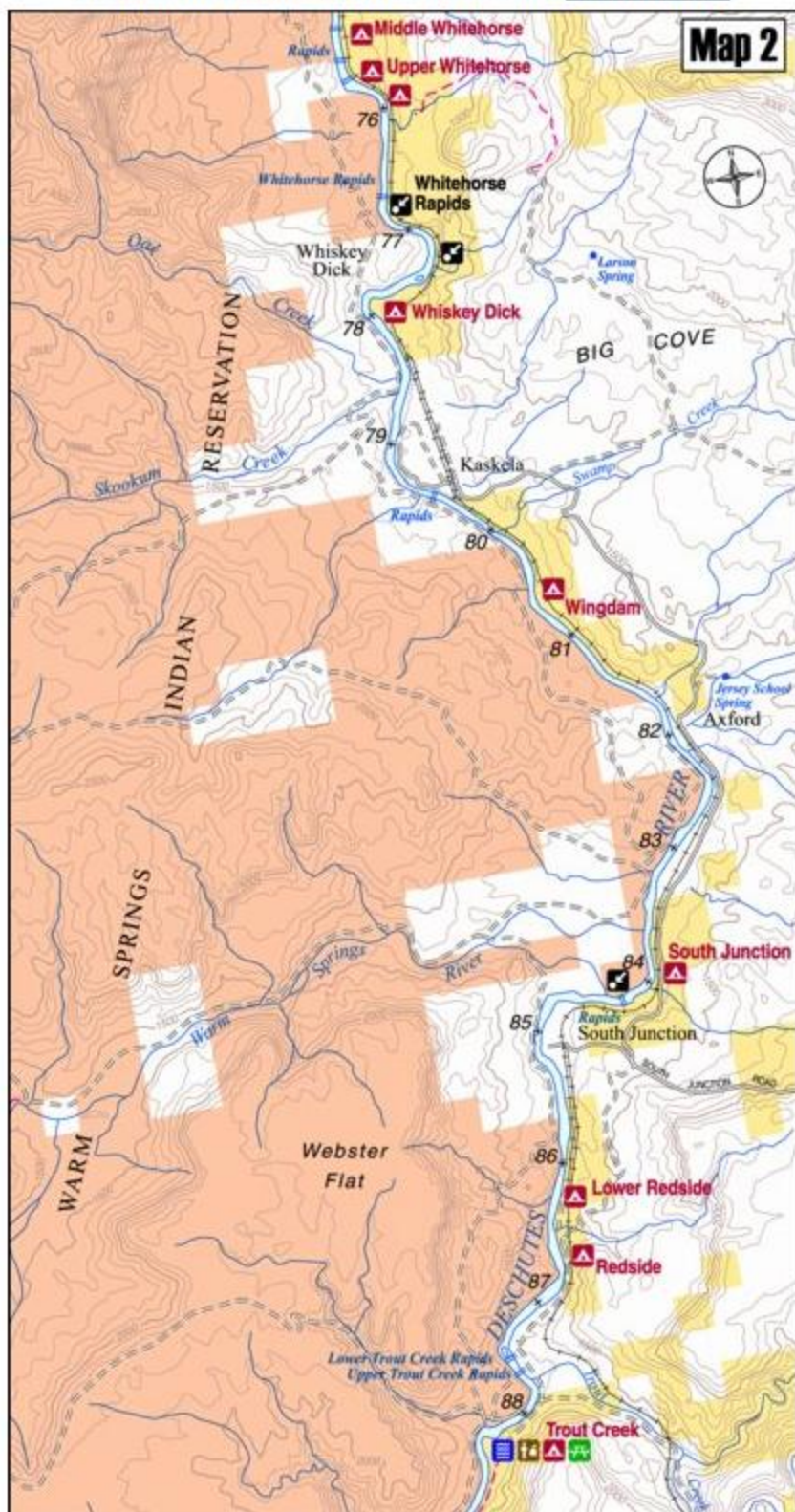


Lower Deschutes River Boating Map



Map 2 : Trout Creek Rapids (87.7) to Whitehorse Rapids (76.4)

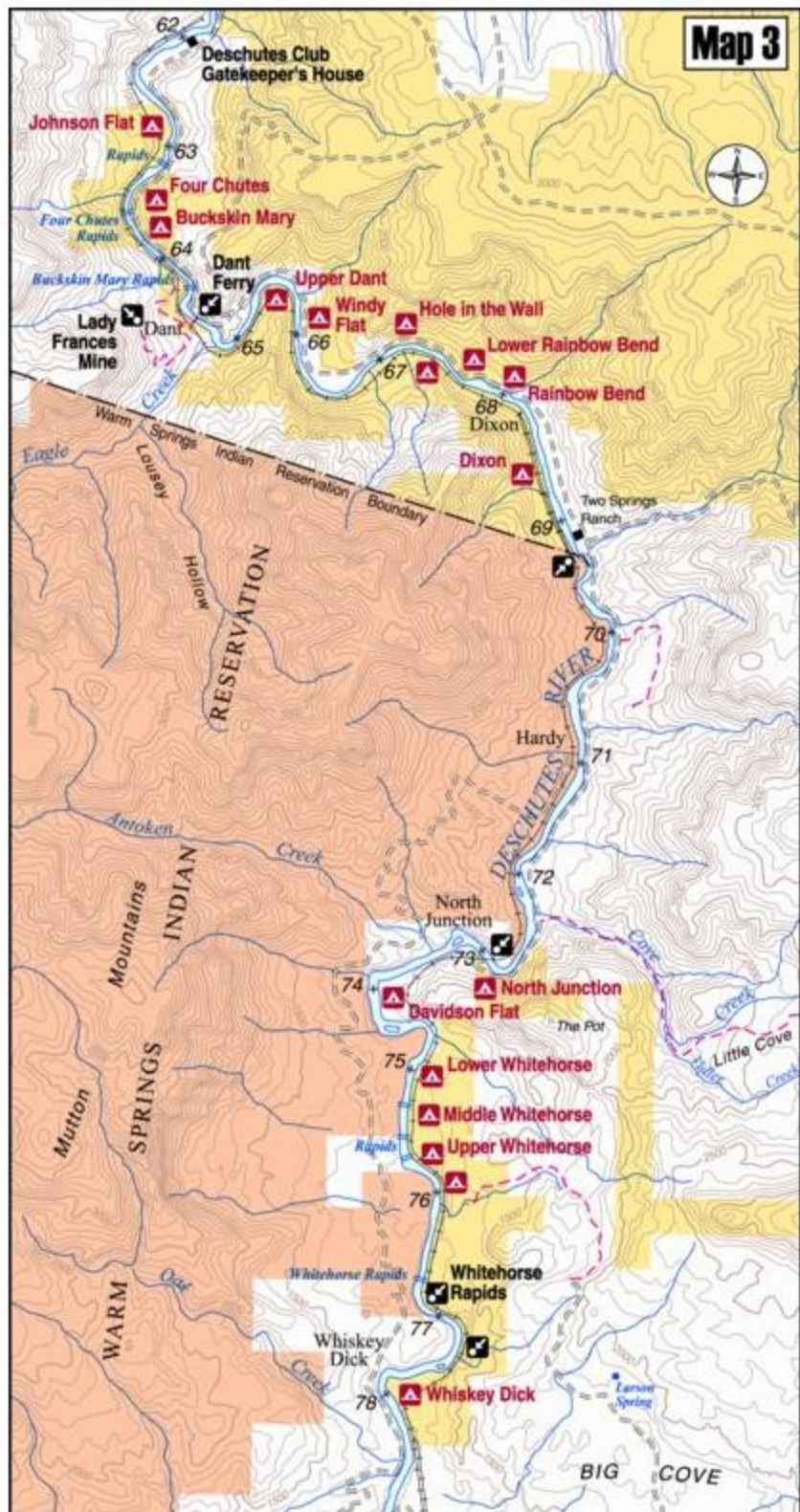
Points of Interest Labeled in Red Are Linked to [Descriptive Text](#)



[Map 2 Descriptions](#)

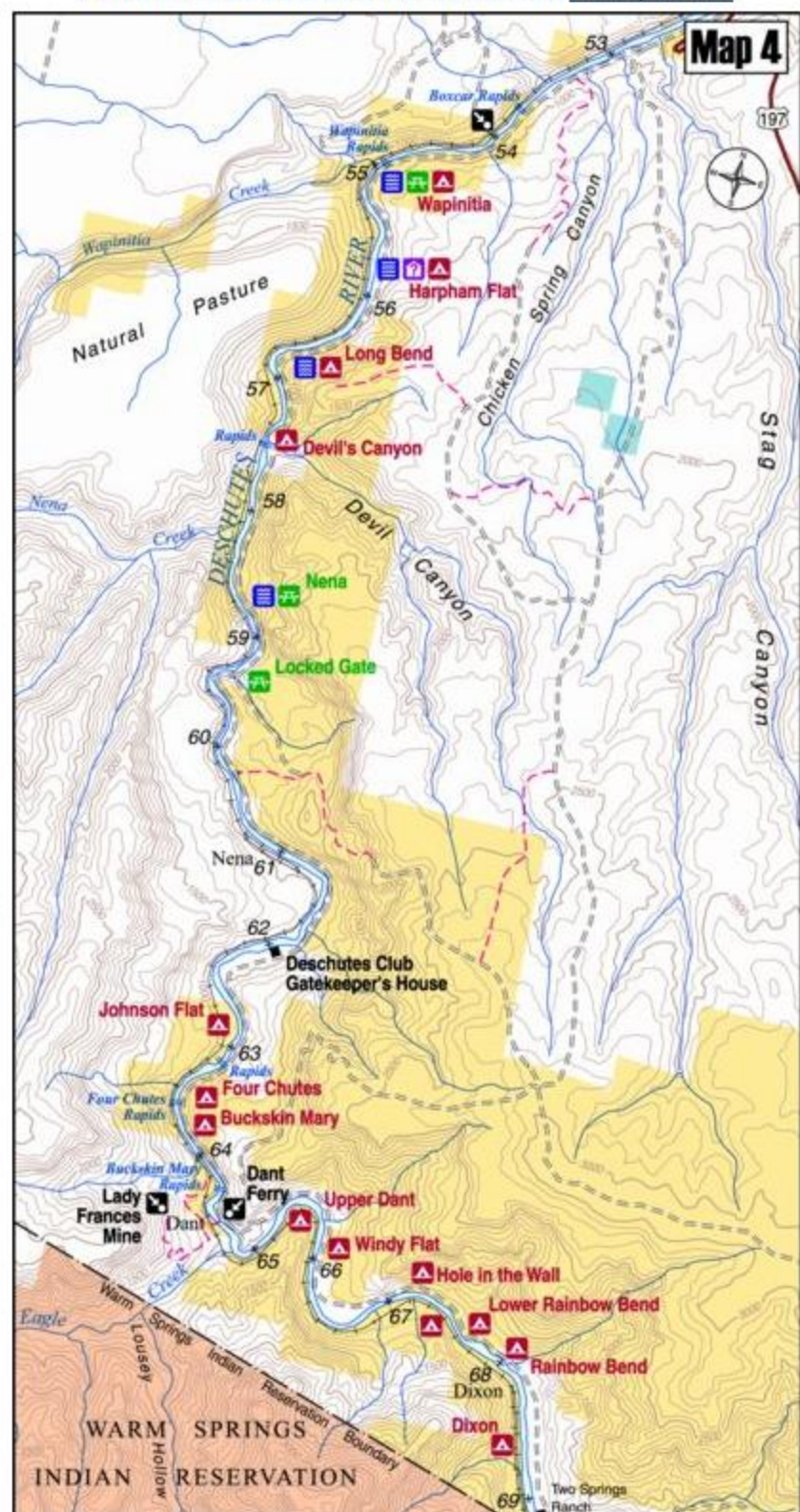
Map 3 : Whitehorse Campsite (76.0) to Dant Ferry (64.6)

Points of Interest Labeled in Red Are Linked to [Descriptive Text](#)



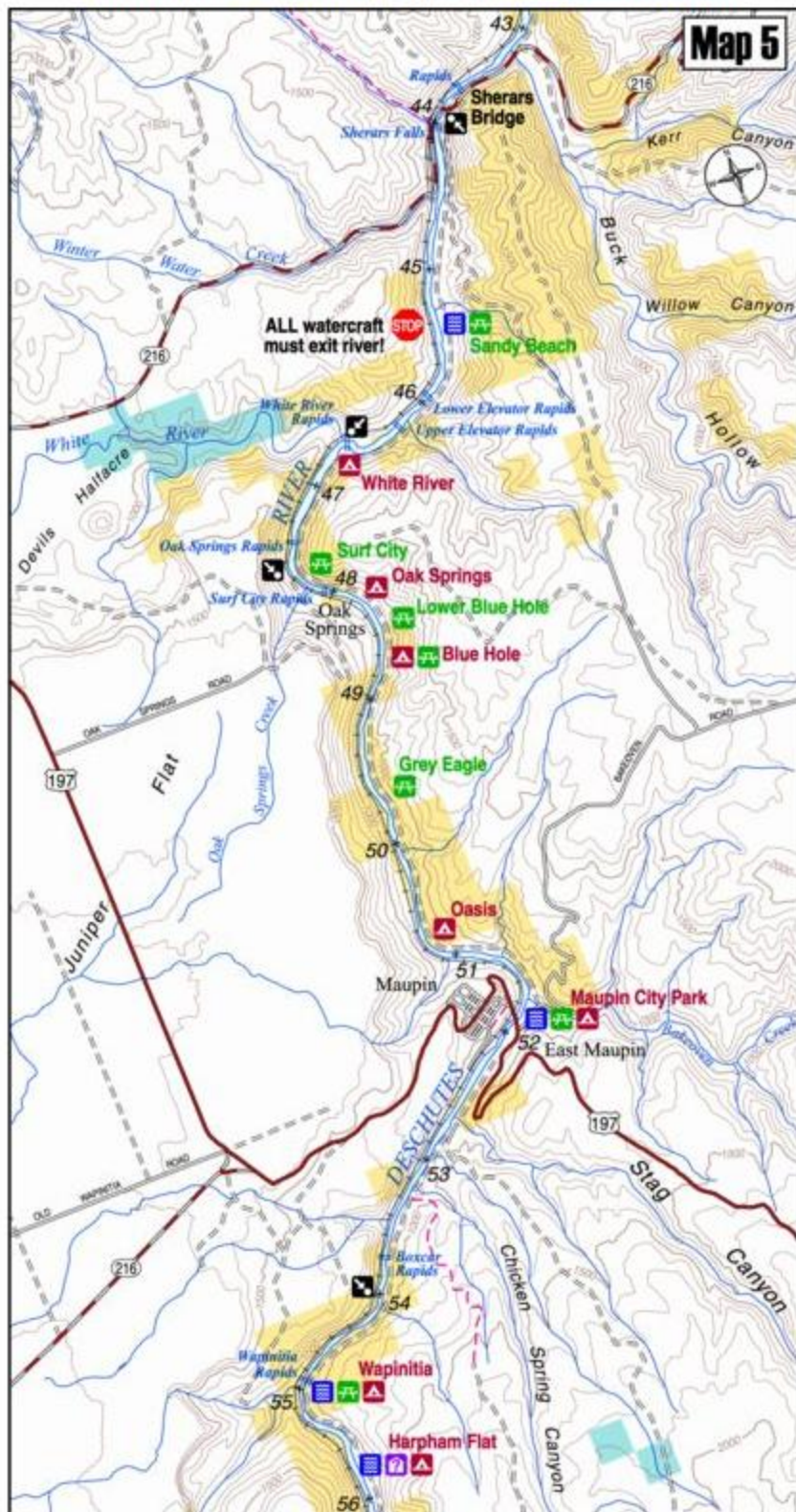
Map 4 : Buckskin Mary Rapids (64.3) to Boxcar Rapids (54.0)

Points of Interest Labeled in Red Are Linked to [Descriptive Text](#)



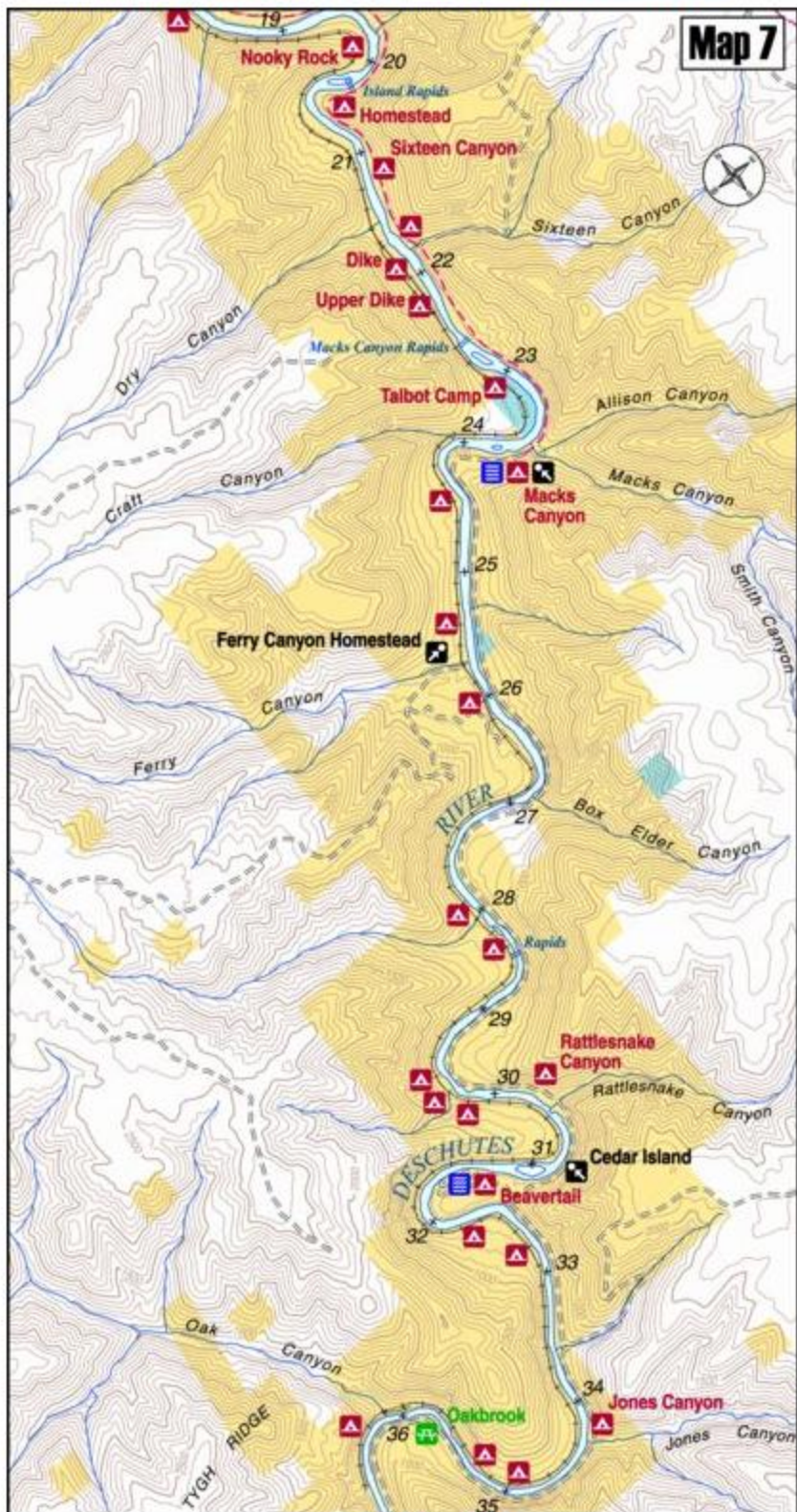
Map 5 : Maupin (52.0) to Upper Elevator Rapids (46.2)

Points of Interest Labeled in Red Are Linked to [Descriptive Text](#)



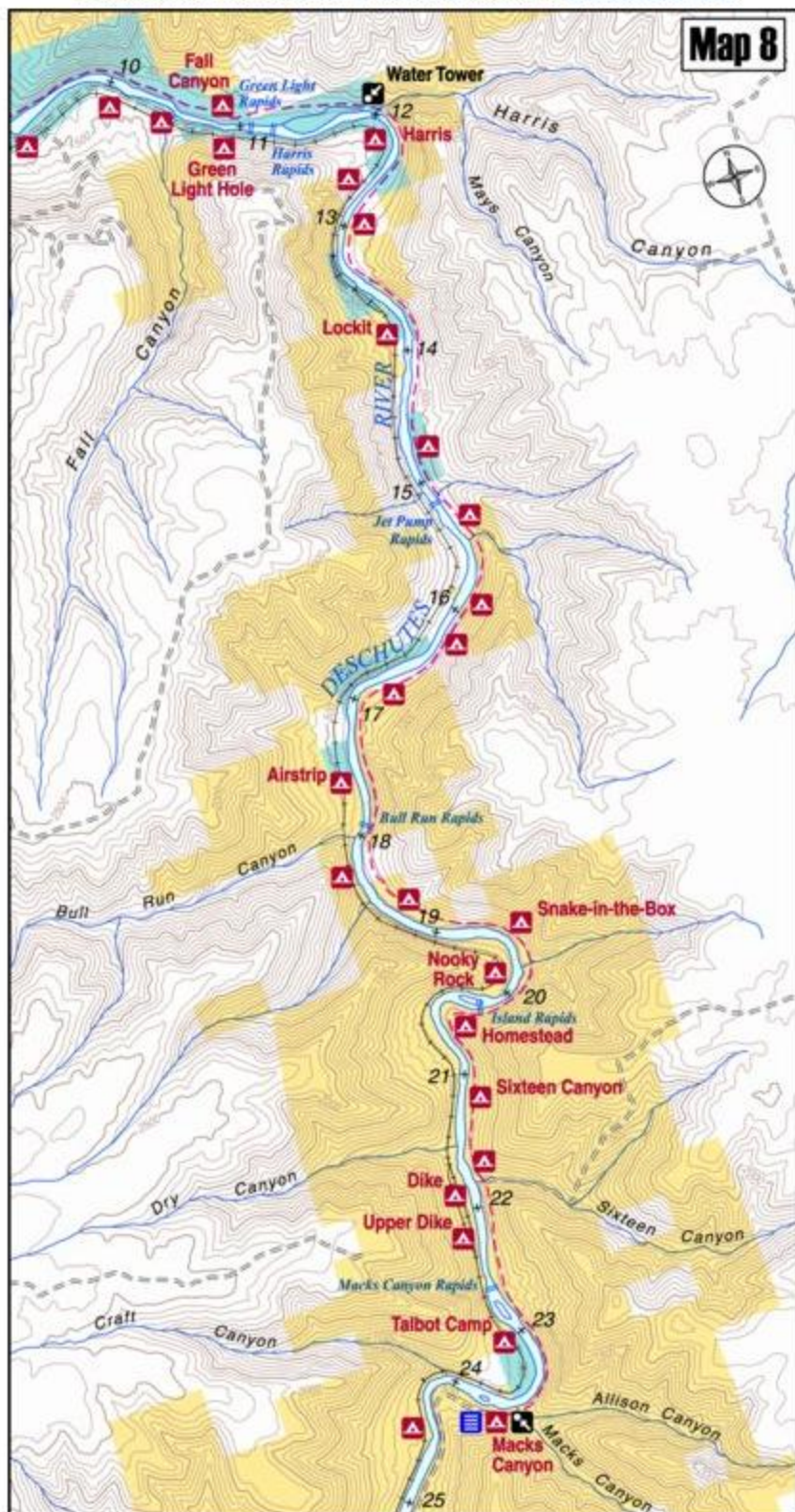
Map 7 : Jones Canyon (34.3) to Dike Campsites (21.8)

Points of Interest Labeled in Red Are Linked to [Descriptive Text](#)



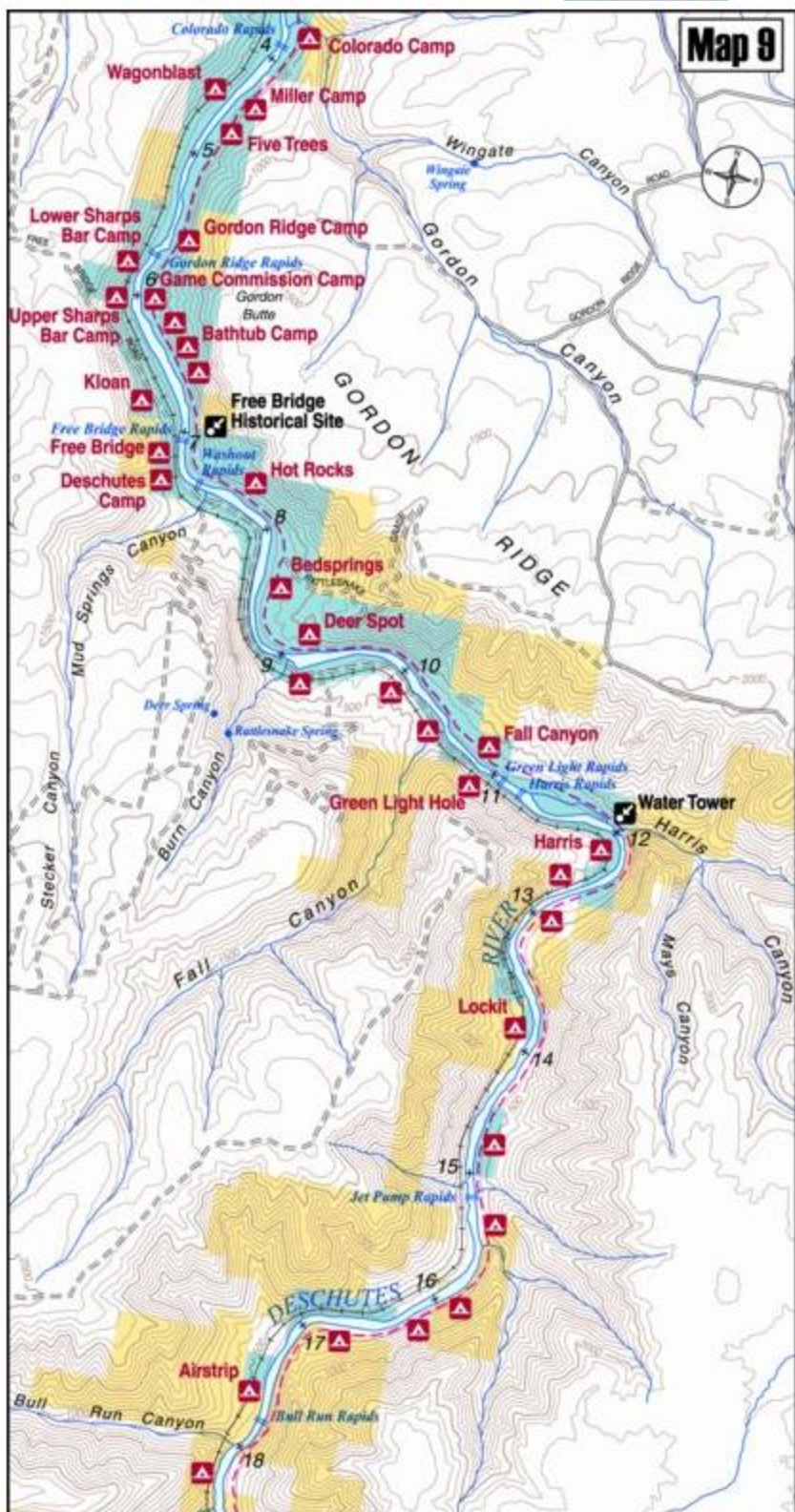
Map 8 Sixteen Canyon (21.3) to Harris (12.0)

Points of Interest Labeled in Red Are Linked to [Descriptive Text](#)



Map 9 : RR Water Tower (12.0) to Kloan (6.8)

Points of Interest Labeled in Red Are Linked to [Descriptive Text](#)



Map 10 : Bathtub Camp (6.5) to Columbia River (0.0)

Points of Interest Labeled in Red Are Linked to [Descriptive Text](#)

